



BROADWAY SIDEWALKS AND BROADWAY MAINTENANCE PROJECTS

CIP # 41606 and #42003

CONSTRUCTION UPDATE #32

Week of November 4, 2024

Hi Everyone!

Construction has begun and these updates will be distributed regularly to keep the community up to date on the status of the projects. Thanks in advance for everyone's understanding and patience during construction.

Current Period

- Daytime work for the upcoming week will include:
 - Layout for the upcoming striping work
 - Concrete finishing work
 - Minor asphalt paving at Schnell and Wiltse
- Nighttime work for the upcoming week will include:
 - Adjusting utilities to grade on Broadway
 - Stamped crosswalk work at Mosquito and Broadway and Schnell School and Broadway intersections
- Traffic control measures will be in place to direct vehicles and pedestrians through the work areas, but there may be some minor delays.
- **Businesses near the project site and their access will remain open during all stages of construction.**

Following Period

- **NIGHT WORK** – Night work should be completed by mid-November
- **DAY WORK** – Daytime work operations will include: Broadway striping and sign installation along with finishing up miscellaneous concrete items.

Important Information

HWY 50 eastbound off-ramp at Broadway will be closed intermittently at night due to nighttime work operations on Broadway.

Contacts

Dion Carr, Resident Engineer, Dewberry, (916) 276-4721, dcarr@dewberry.com

Melissa McConnell, City Engineer, City of Placerville, (530) 642-5250, mmcconnell@cityofplacerville.org

Please feel free to contact us directly with any questions or concerns.

Thank you!



BROADWAY SIDEWALKS AND BROADWAY MAINTENANCE PROJECTS

CIP # 41606 and #42003

Stout Court Grading and Paving (top and bottom)



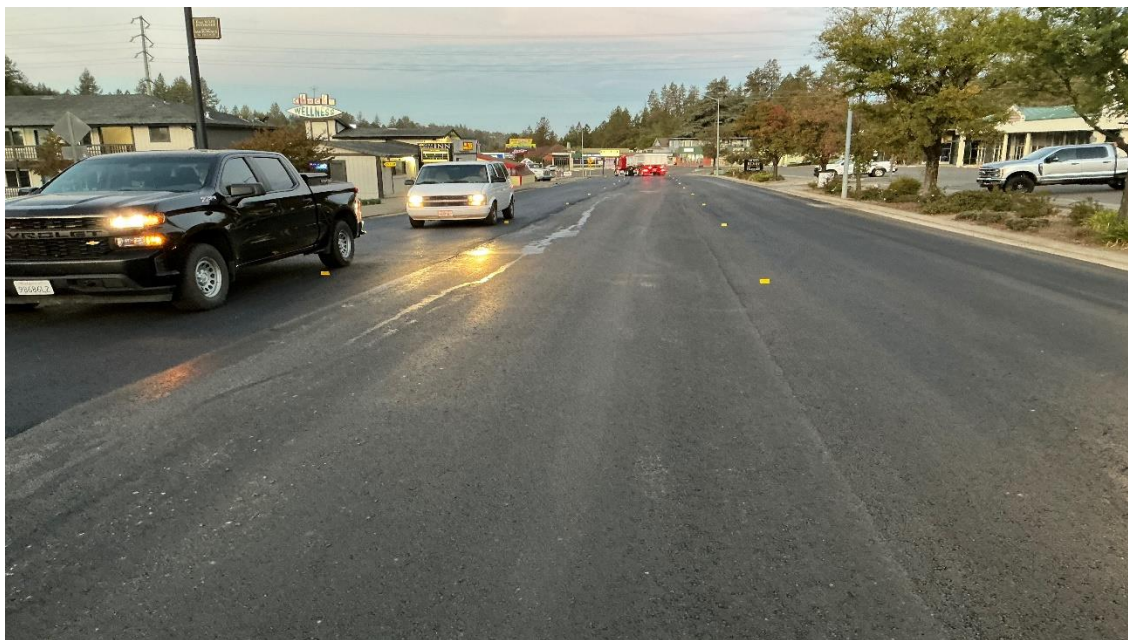
Thank you!



BROADWAY SIDEWALKS AND BROADWAY MAINTENANCE PROJECTS

CIP # 41606 and #42003

Broadway Mainline Paving (top and bottom)



Thank you!